

# Douglas GA

COFFEE COUNTY



**Brewing** Rich Opportunities

[DouglasGA.org](http://DouglasGA.org)



Let us be the first to welcome you *HOME!*



Member  
FDIC  
Equal Housing  
Lender



**MORTGAGE OFFICER | JOY VICKERS**

NMLS# 740739



**FAST, FRIENDLY, KNOWLEDGEABLE**

**PURCHASE, REFINANCE &  
CONSTRUCTION**

**YOUR HOME FOR HOME LOANS**

Bank NMLS# 696095

 [www.fnbcc.com](http://www.fnbcc.com)

 420 S Madison Ave, Douglas, GA 31533

 (912) 384-1100



# COLLINS CARDIOLOGY

*Dr. Darrel Collins - Tara Spivey, PA-C*

Evaluation & Follow Up Care for all Heart Problems  
Congestive Heart Failure • Pacemaker Checks • High Blood Pressure  
Chest Pain • Shortness of Breath

1208 Ocilla Road, Douglas, Georgia 31533 | 912.384.6276 | [www.CollinsCardiologyGa.com](http://www.CollinsCardiologyGa.com)

*Caring for the Heart*





# Coffee

## COUNTY SCHOOLS

Our Vision: Creating a stronger community through an equitable and excellent education for every student.

**Coffee County Board of Education**  
**Dr. Morris Leis, Superintendent**

1311 South Peterson Avenue • Douglas, Georgia 31533 • (912) 384-2086

[www.coffeeschools.org](http://www.coffeeschools.org)





## TABLE of CONTENTS

- 2 The Chamber
- 3 Getting Started
- 8 Martin Centre
- 11 Economic Development
- 16 General Coffee State Park
- 18 Arts & Culture
- 22 Education
- 27 Healthcare
- 29 Housing & Real Estate



The Douglas-Coffee County Chamber Magazine is produced by the Douglas-Coffee County Chamber of Commerce. Although every effort has been made to ensure accuracy, we cannot guarantee that dates, telephone numbers, and other information have not changed.

Call 912-384-1873  
 or visit us at [douglasga.org](http://douglasga.org).  
 The Atrium Office Complex  
 114 North Peterson Avenue, Suite 205  
 Douglas, GA 31533



## Welcome to Douglas-Coffee County, Georgia

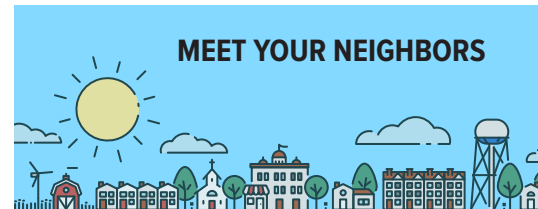
Find small-town charm with big Southern hospitality here in Douglas-Coffee County, where you can whisk up discoveries by exploring natural wonders, shopping, dining, and cultural entertainment. We are a progressive area thanks to our outstanding educational systems, exceptional healthcare, thriving industry, robust library system, and plenty of outdoor recreation. Douglas Downtown Historic District and Gaskin Avenue Historic District are both listed on the National Register of Historic Places.

We are home to festivals that include the Gopher Tortoise Festival and Taste of Douglas. Our own General Coffee State Park is one of Georgia's "leaking secrets," while Broxton Rocks Preserve is one of Georgia's natural wonders of eroding sandstone and waterfalls that inspire the growth of rare plant species. Or step inside the WWII Flight Training Museum to send your imagination back to the 1940s.

Douglas is the heart of the region, home to Coffee Regional Medical Center, South Georgia State College, Wiregrass Georgia Technical College, and Douglas Municipal Airport.

Within these pages, we introduce you to all the ways you can live, work, and play

here. Get a look into the industry trends to tap into, and even learn how to arrange electricity service when you move in. Business, community, and fun are brewing here in Coffee County!



### Coffee County Population: 43,048

- Douglas.....11,680
- POPULATION BY AGE:**
- 19 years and younger .....28.0%
  - 20-49 years .....40.3%
  - 50-69 years .....23.7%
  - 70-79 years .....5.7%
  - 80 years+ .....2.4%

Sources: U.S. Census Bureau 2021, Sperling's Best Places



Thank you for reading the Douglas-Coffee County Chamber Magazine. Please help us make it even better by taking our brief survey:

	<b>TOTAL MARKETING</b> Beyond Full Circle Marketing
Linda Mosely.....	Publisher
Mark Mosely.....	Executive Editor
Mary Dugan.....	Agency Director
Tonia Haymans.....	Marketing Executive
Teresa Greer.....	Managing Editor
Lydia Cobb.....	Associate Editor
Jane Bozza.....	Director of Communications
Lauren Doucet.....	Agency Services Project Manager
Stephen Hefner.....	Creative Director
Bob Swinehart.....	Graphic Designer
Daniel Thompson.....	Graphic Designer
Spence Garcia.....	Graphic Designer
Natalie Bishop.....	Graphic Designer
Bobby Haven.....	Photographer
Gavin Dunn.....	Videographer
Glenn Carson.....	Senior Director of Operations
Connie Parker.....	Business Manager
Mary Marlow.....	Publications & Marketing Services Coordinator
Katherine Dean.....	Digital Marketing Specialist
Katherine Czarick.....	Digital Marketing Specialist
Elizabeth Cobb.....	Marketing Strategist
Thomas Schaefer.....	Director of IT
Kenneth Brook.....	Website/SEO Programmer

The Douglas-Coffee Chamber of Commerce Community Guide is published by 365° Total Marketing, P.O. Box 20568, St. Simons Island, GA 31522, 912-638-0780.

©Copyright 2023 by Great Southern Publishers. Reproduction in whole or part without written permission is prohibited. Call 365° Total Marketing for all your design and printing needs, 800-697-5568 or 365DegreeTotalMarketing.com.



# The Chamber



## Top 12 Reasons to Join the Chamber

**1. Participate in Local Economic Development**  
Joining the Chamber supports economic development through job retention and growth activities that help to create a strong workforce.

**2. Improve Your Bottom Line**  
Chamber programs are designed to help your company prosper. Chamber members are encouraged to “remember a member” when fulfilling business and personal needs for goods and services.

**3. Expand Your Networking**  
This is one of the most important benefits of membership. All you have to do is get involved!

**4. Make Sure You Are on the List**  
Local citizens and those relocating or visiting DO contact the Chamber for where to stay, shop, and do business. The Chamber refers ONLY Chamber members.

**5. Learn from Business & Industry Programs**  
The Chamber offers Business and Industry education programs that keep our members “in the know.”

**6. Have a Voice in Issues Affecting Your Business**  
The Chamber works to establish relationships with political leaders and is a voice for business by tracking legislation to support business growth.

**7. Use Our Website to Market Your Business**  
Use your Chamber’s website to post coupons on our Hot Deals page, add events to our Calendar, and list employment openings.

**8. Take Advantage of Chamber Savings Programs**  
The Chamber Advantage programs offer discounts at participating merchants. The Drugs Don’t Work program provides a 7.5% discount on Workers Comp Insurance.

**9. Healthy Business Alliance**  
Douglas-Coffee County Chamber of Commerce participates in the Healthy Business Alliance - a statewide program with Chambers who use large group buying power to negotiate advantages on group products.

**10. Georgia Chamber SMART Program**  
This program provides small businesses of 2-50 employees with Anthem Blue Cross Blue Shield Health Plan.

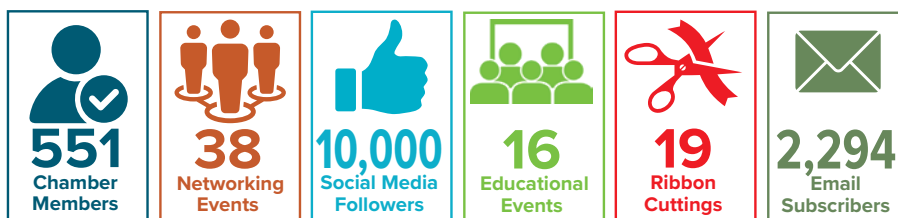
**11. Enhance Your Credibility**  
Being a member sends your customers the right message; and we encourage members to display their membership in outreach events and marketing.

**12. Give Back to Your Community**  
If you are tracking the pulse on the future growth and development of the community, joining the Chamber is the proactive thing to do.

## Get Brewing with Douglas-Coffee Chamber

The Douglas-Coffee County Chamber of Commerce is a voluntary organization of businesses and individuals who have joined to promote the economic well-being of Douglas and Coffee County, Georgia.

### Douglas-Coffee County Chamber of Commerce Annual Impacts:



### Get in on Chamber Spectrum Benefits

Available exclusively for chamber members as small as 2+ employees, the Spectrum Benefits program is designed to give members a secure, comprehensive, and affordable employee benefits solution centered around an ACA-compliant health insurance plan. By leveraging the collective buying power of your chamber, we now provide a variety of affordable employee benefits that include proactive cost containment and employee wellness features, allowing member companies to strategically manage the healthcare supply chain and maximize benefits for their employees.



“  
I’ve learned so much being an active member of the Chamber. It’s not enough to only see what’s needed in my city, it’s also my obligation to roll up my sleeves and work to create, maintain and develop a community I can be proud of!

**Dr. Tracy McClelland**  
Medical Institute of South Georgia



# Getting Started



## VISITORS CENTER at

### Douglas- Coffee County Chamber of Commerce

114 North Peterson Ave., Ste. 205  
Downtown Douglas  
912-384-1873

### Coffee County Government

101 S. Peterson Ave.  
Douglas, GA 31533  
912-384-2865

Clerk of Court.....	912-384-2865
Commissioners .....	912-384-4799
Elections .....	912-384-7018
Magistrate Court.....	912-384-2983
Planning and Zoning.....	912-389-3433
Probate Court.....	912-384-5213
Tax Assessors .....	912-384-2136
Tax Commissioner .....	912-384-4895

### City of Douglas

302 S. Madison St.  
Douglas, GA 31533  
912-389-3402 | cityofdouglas.com

City Clerk .....	912-389-3405
City Manager .....	912-389-3401
Community Development .....	912-383-0227
Customer Services.....	912-389-3499
Finance .....	912-389-3496
Human Resources.....	912-389-3494
Parks and Recreation.....	912-384-5978
Public Information.....	912-383-0277
Vehicle Maintenance .....	912-389-3454

### Emergency

City of Douglas After Hour	
City Emergency .....	912-384-3302
Non-emergency Government Offices	
City of Douglas Fire .....	912-384-4815
City of Douglas Police .....	912-384-2222
Coffee County Fire.....	912-389-1705
Coffee County Sheriff's Office ..	912-384-4227

### Transportation

Douglas Municipal Airport.....	912-384-1409
--------------------------------	--------------

### Utilities

#### Electricity

City of Douglas Electric .....	912-389-3445
Georgia Power Company.....	888-660-5890
Satilla REMC .....	912-384-1964

#### Natural Gas

City of Douglas Natural Gas .....	912-389-3427
-----------------------------------	--------------

#### Water

City of Douglas Water and Wastewater (Operated ESG).....	912-389-3444
-------------------------------------------------------------	--------------

Visit Douglas-Coffee County  
where we always have something brewing for you.

Think of the Douglas-Coffee County Chamber's Visitor's Center as the barista for your stay here. We are Coffee Strong and this area is one of Georgia's best kept secrets.

[www.visitdouglasga.org](http://www.visitdouglasga.org)



114 N Peterson Ave., Suite 205, Douglas, GA 31533

912-384-1873



# Getting Started

## Sanitation Collection & Recycling

City of Douglas Public Works ..... 912-389-3450  
 GSL Environmental.....912-384-6001  
 PalletOne (Pallet and Industrial Recycling)  
 ..... 912-662-1484  
 Solid Waste Management Authority  
 of Atkinson County ..... 912-534-5972  
 Southland Waste Systems ..... 912-398-8664

## Cable, Internet & Phone

ATC Broadband ..... 912-632-8603  
 Digital Express Wireless, Inc. (Verizon)  
 ..... 912-383-6503  
 Vyve Broadband.....855-367-8983  
 Windstream Communications ..... 912-384-1072

## Driver's License

New residents are required to obtain a Georgia driver's license within 30 days of establishing a permanent residence. Military personnel on active duty may request a renewal of their driver's license by mail, if verified in the specified manner described by the Department of Driver Services.

## Department of Motor Vehicles

348 Thomas Frier Sr. Dr. | Douglas, GA 31535  
 678-413-8400 | dds.ga.gov

## Voter Registration

If a voter moves or changes their name, they must complete a new application to update registration within 30 days after the change. A voter may register anytime up until 30 days prior to an election. Voters who live within city limits at the time of registration are automatically registered to vote within their city as well as countywide elections.

## Coffee County Board of Elections and Registration

224 W. Ashley St. | Douglas, GA 31533  
 912-384-7018 | coffeecountygov.com



“

”

Coffee County is known for its small town feel and for being a growing and thriving community. I believe that Douglas-Coffee County would be a great option for individuals and families who desire to be in a progressive and family-oriented community.

**Reuben Speight, Greater Destiny International Ministries**

# Community Organizations

There is no quicker way to make yourself part of new community than to get involved with a group of like-minded people. And, your donations of time, money, and “sweat equity” help make Douglas-Coffee County even greater than it already is. You'll experience the joy of giving back and make new friends in the process.

For a list of organizations of which you may want to become a part, please visit the Douglas-Coffee County Chamber's online directory:



City of  
**Douglas**  
Georgia

Always Shining Bright

302 South Madison Avenue | P.O. Box 470  
Douglas, Georgia 31533

912-389-3401  
www.cityofdouglasga.gov



# Your Family Is Welcome!

Greater Destiny International Ministries seeks to empower individuals with the word of God by the leading of the Holy Spirit from a holistic point of view. These empowered individuals will in turn empower others.

## Worship Services

### Sundays

9:30 am - Morning Manna

11:00 am - Morning Worship Service

### Wednesday

6:30 pm

Midweek Bible Study



**GREATER DESTINY**  
INTERNATIONAL MINISTRIES

**912-389-2084**

**gdimdouglas.org**

**580 South McDonald Ave., Douglas, GA**

Pastor Rueben Speight  
and Lady Allyson Speight







Covenant Kids



COVENANT YOUTH



Covenant

A Community Where We Laugh, Love, Grow & Belong Together

Pastors Gregory & Jackie Pope



@covenantchurch2



Covenant Church Douglas



Download our App  
Covenant Church Douglas

oneconnection.org

912-384-0351

3255 US Highway 441 S Douglas, GA 31535







First United Methodist Church



Douglas-Coffee County Chamber can help you find your spiritual gathering place:

**Faith & Religion**

If you are in search for inspiration and ways to enjoy a meaningful life, various church communities have open doors here in Douglas-Coffee County. Find a church familiar to you or a new affiliation. There are many ways to offer you community in the spheres of spirituality.

Our county has dozens of places of worship: African Methodist Episcopal (AME), Anglican, Baptist, Catholic, Church of God, Episcopal, Methodist, non-denominational, and Presbyterian.

**#FORCOFFEE**

is a mission by GracePointe Church to fund community initiatives in the county with branded "For Coffee" retail items. It's all about sharing with residents that there is a God there for them. Visit the For Store:



**SUNDAY SCHOOL:**

Sundays at 9:30 am. We have classes for all ages!

**CHURCH SERVICES:**

Sundays at 10:45 am and 6:00 pm

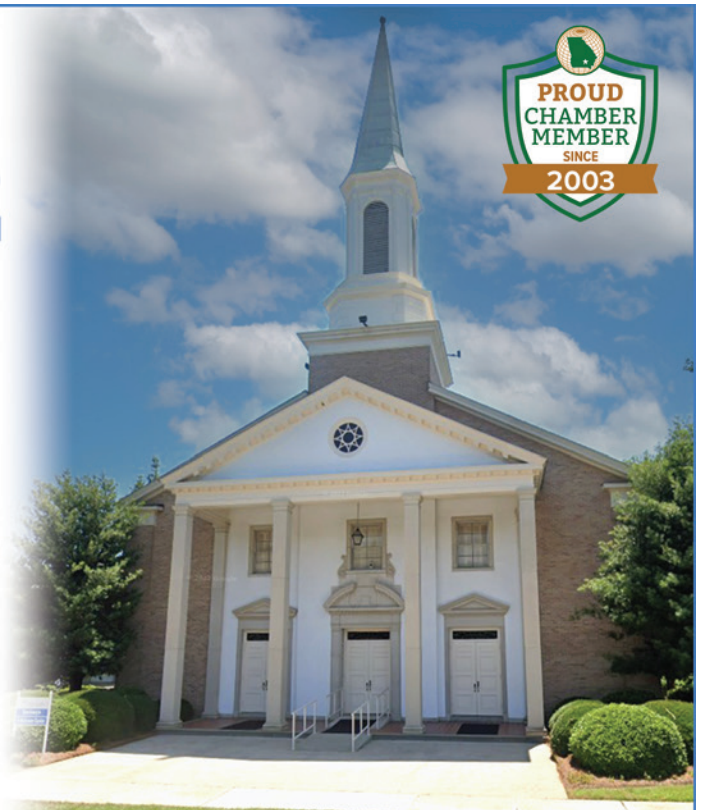
**WEDNESDAY PROGRAMS:**

- Childrens Ministry: 6:00 pm
- Mens & Ladies Discipleship: 6:15 pm
- Student Ministry: 6:30 pm
- Pastor's Study: 6:30 pm

124 Gaskin Avenue North • Douglas, GA  
912.384.5598

[fbcdouglas.com](http://fbcdouglas.com)

**Mission: Love God. Love Others. Make Disciples.**





# ART DECO ALIVE

## The Martin Centre experience revitalizes downtown Douglas

by Lydia Cobb

The flashy building on Ashley Street in Douglas was designed to make you smile. The Martin Centre is a restored Art Deco 1940s movie theater that today hosts live performances and special event rentals. The community leaders behind the latest renovation in the historic building's chapter are two families: Brian and Allison Norris, and Robb and Lorna Hurst.

"We took over ownership in the fall of 2019," said Brian Norris, third generation partner in his family's retail business. "The challenging part was that meant we owned it for three to four months before COVID hit. We had sold out two shows ... we didn't get to hold those shows for 15 months."

Brian Norris and Robb Hurst are both business owners and longtime Douglas residents. "The Martin Centre is the centerpiece of our downtown," said Norris. "We both have a passion for live music. That is something we share, and when this was put up for bid, we got together to save it."

"I've always been active in civic stuff here locally," shared Robb Hurst, second generation partner in his family's CPA firm. "I felt like shutting that theater again was like ripping the heart out of downtown Douglas. It's so important to maintain."

Norris described it as a passion project. "It contributes to Douglas and keeps Downtown vibrant – something we're proud to be part of."

Norris and Hurst offered refunds to those who had bought tickets to the two shows that had to be canceled at the start of the pandemic. The owners are amazed

that not one person requested a refund – because the show would eventually be rescheduled – but that says everything about the tremendous community spirit behind The Martin Centre's revival.

Seeing a performance here, Norris said, is an intimate experience. "Any type of show, live music, or whatever it may be – there's not a bad seat in the house." With national touring bands stopping in Douglas, the theater is attracting people from Jacksonville and Tallahassee, Savannah, and Macon.

"We see new faces walking around downtown, shopping at our shops, eating dinner. Our hotels have been full with shows. It has definitely created tourism," added Norris.

Norris and Hurst created the nonprofit organization, The Martin Centre Preservation Company, with the goal to create access and excitement for the arts in the Coffee County community while preserving the historic Martin Centre.

Last summer the front-of-house lights, stage lighting, stage curtains, and sound system were replaced among primary capital improvements they're making to continue the Martin Centre's restoration.

Approximately half the business is supported by venue rentals for dance recitals, church services, a recent MMA event, wedding receptions, memorials, and high school graduations. The Martin Centre features seating for 750, three dressing rooms, and a concession and coffee bar that is available for events.





**Brian Norris**

In the late '70s, the last movie played at the old Martin Theatre. The building was donated to the City of Douglas by the Martin Organization in 1981. The venue evolved into a performing arts theatre and conference destination in 1999. This community icon is now listed on the National Register of Historic Places in Downtown Douglas Historic District.

"We would not be here without local support," confirmed Norris. He and Hurst are finalizing contracts for nationally known and Grammy award-winning musicians who will perform in Douglas this year.

"This is a major piece of economic development for downtown Douglas – all of Coffee County," said Hurst. "It's great to see people lined up waiting to get in, people coming in from miles and miles away, coming to Douglas."

Catch a show at The Martin Centre and become a supporting member of the nonprofit Martin Centre Preservation Company. Every guest contributes to a more vibrant downtown Douglas.

109 E. Ashley St.  
Douglas, GA 31533  
(912) 389-6332 | themartincentre.org



*Be Known  
For Something  
Good*

Sunday Services: 9AM & 11AM  
Midweek, Wed: 6:30PM

942 Bowens Mill Rd SW  
Douglas, GA 31533



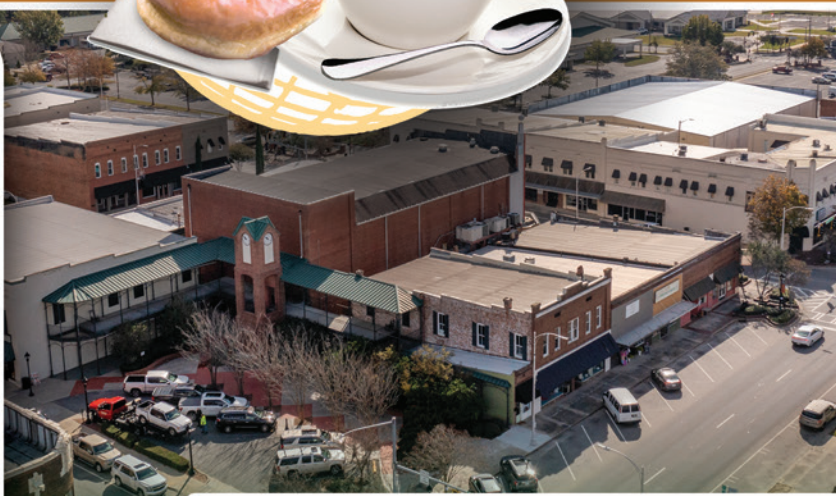
[www.gracepointechurch.org](http://www.gracepointechurch.org)





# Business is brewing

Douglas-Coffee County Chamber & Economic Development Authority



Douglas-Coffee County prides itself on being a community with a high quality of life as we continue to grow our economy. We have built a diversified industrial base, while staying true to our heritage as an agricultural community. We continue to develop so we can welcome new industries while also facilitating growth of our existing businesses. Give us a look, and you'll find out why Douglas-Coffee County Georgia is a great place to visit and an even better place to call home.

## Satilla Park Manufacturing Site

20,500+ manufacturing workers within 60 miles

13,000+ workers in metal fabrication, machinery & equipment, and transportation equipment

- Subdividable
- Shovel Ready
- Industrial Zoned
- Municipal Utilities
- Highway Access
- EDA Owned



Spec Building  
Greenfield  
Pad Ready

**DOUGLAS**  
COFFEE COUNTY • GA  
chamber and economic development authority

For more information about Coffee County and its business and lifestyle amenities, please contact:

**Douglas-Coffee County  
Economic Development Authority**

The Atrium Complex  
114 N Peterson Ave., Suite 205  
Douglas, GA 31533

912.384.1873 [douglaseda.com](http://douglaseda.com)



# Economic Development



Visit [DouglasEDA.com](http://DouglasEDA.com) for info on:  
Federal Opportunity Zone  
Tier 1 Incentives  
HUBZone  
New Market Tax Credits

## A Strong Coffee is Why Douglas is a Top Choice

**B**eautiful parks. High quality healthcare. Outstanding schools. Coffee County holds significant appeal for business executives seeking to relocate and who desire to ensure a high quality of life for employees.

### Off to Market

We are a regional commercial and employment hub in a predominantly rural part of the state, but with more than 288,000 workers within a one-hour drive.

Coffee County is in the heart of South-Central Georgia, between four interstates, which makes it ideal for distribution centers and manufacturers. Plus, our proximity to CSX Rail and international airports in Jacksonville, FL and Atlanta, GA connects us to the global marketplace.

We are close to deep seaports, the closest in Savannah, Jacksonville, and Brunswick. Beyond those, there are Charleston, Mobile, Tampa, and even New Orleans.

Two miles south of the City of Douglas is **Douglas Municipal Gene Chambers Airport (DQH)** which has embarked upon its capital improvement plan for expansion in services to accommodate an increasingly progressive Coffee County economy. South Georgia's "friendliest airport" has two courtesy vehicles that pilots and guests can reserve for getting to and from the airport.

Douglas-Coffee County **Veterans Park** is adjacent to Mickey Greer Terminal and honors each branch of military service. The personalized brick pedestrian corridor is a lasting salute to the men and women who have served their country.

Our community is home to nearly 175 manufacturing firms and nearly 700 service firms that include shopping, dining, hotels, and professional services.

We are rich in industry: chemicals, food distribution and manufacturing, poultry, and farming. You may recognize household names in some of our local industries, such

*continued on page 14*



“

”

We have booming industries, a thriving downtown, and new developments every day it seems. I have so enjoyed watching this city grow and become a hot spot for new development. I am thankful for a place that is willing to embrace the change that will improve this city and economy for years to come.

**Savannah Holliday**  
**Premium Waters**





Thank You Coffee County

- Lumber
- Grills
- Canning & Freeze Dryers
- Drywall
- Insulation
- Appliances
- Hardware
- Paint Sundries

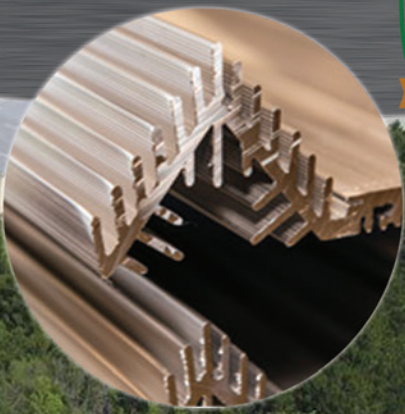
- Roofing
- Roof Trusses
- Doors & Windows
- Cabinets
- Garage Doors
- Power Tools & Accessories
- Plumbing
- Electrical

**LOTT BUILDERS SUPPLY CO.**  
 "SERVING SOUTH GEORGIA SINCE 1922"

**ACE Hardware**  
 912-384-1800  
 1201 Peterson Avenue North  
 Douglas, GA 31533



Operating In Douglas Since 1986



Supplier of linear and fabricated aluminum components to a variety of markets, including construction, transportation, machinery and equipment, electrical, consumer durables, and recreational vehicles.

**ELIXIR EXTRUSIONS**  
 DOUGLAS, GEORGIA

1300 Pope Drive · Douglas, GA 31533  
 (912) 384-2078  
 elixirext.com





## Lott Builders Supply Turns 100

Owner David Lott looks forward to the next century in business

One hundred years ago, Lott Builders Supply came into being in a large mule and horse stable. David S. Lott, owner, credits his great-grandfather, Seward Lott – the youngest of 20 siblings – with inspiring the family business. Seward sold buggies and wagons as part of his horse and mule trade from the stable on Columbia Avenue where the police station is today.

Seward's son, Clinton Lott, Sr., officially launched Lott Builders Supply in 1922 when he converted the stable into a building supply store. David's grandfather welcomed three partners into the business and upon their passing, each of their families sold back their 10-percent stake to the company.

David's father, Clinton Lott, Jr., came into the business in 1949 as a graduate of the University of Georgia and having served in the U.S. Navy. David's uncle, Francis Lott, entered the family business in 1963.

"I think having the opportunity to inherit an ongoing business is very rare. Even rarer is that it continues on," said David Lott, third-generation owner. "It's a great opportunity, but along with great opportunity comes great responsibility."

David's passion to continue the family business deepened when he bought the interests from his two brothers and uncle about 20 years ago. He describes his dad as a great leader, and he wanted to keep the family business after his passing.

"I've never worked any other place in my life. I don't really know what it's like to go out in the field and get a job," said David. "Every day since I got out of college at Georgia Tech – every day I look forward to going to work."

In fall 2022, the Douglas-Coffee County Chamber hosted a Grand Opening ribbon cutting at Lott Builders Supply to jumpstart the next 100 years, as part of a week-long Centennial



David Lott is the fourth generation owner of the Douglas store

celebration in the store with giveaways and employee photos. The Chamber congratulates Lott Builders Supply on achieving this milestone, and for all the company has done for the community through the generations.

by Lydia Cobb









**PREMIUM QUALITY  
PREMIUM SERVICE  
PREMIUM FOOD SAFETY**




**GROWER-OWNED**

- ◆ Peanut Shelling ◆ Peanut Oil ◆ Peanut Seed ◆
- ◆ Shipping Globally ◆
- ◆ Creating Value and Stability for our 400+ Grower-Owners ◆

For more information, call 912-292-0291 or visit [www.premiumpnut.com](http://www.premiumpnut.com)

## DOUGLAS MUNICIPAL GENE CHAMBERS AIRPORT



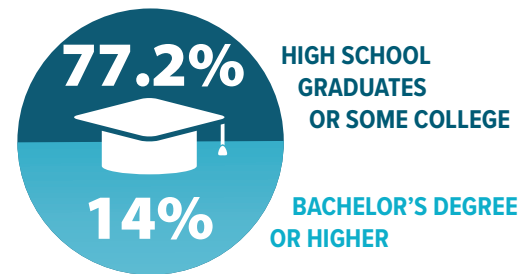
[www.cityofdouglasga.gov/airport](http://www.cityofdouglasga.gov/airport)      **24hrs/day Self Serve Jet A & 100 LL**

440 Elton D. Brooks Blvd. • Douglas, GA 31533      **Airport Terminal Hours**  
**(912) 384-1409**      **Monday-Friday 8:00 a.m.-5:00 p.m.**

as Walmart Distribution and Pilgrim's, a multinational food company. Cargo trailer manufacturing is also a leading industry here. A glimpse at diverse industries:

- *Premium Waters: national bottled water producer, distributor, and supplier*
- *Optima Chemical: a full-service chemicals company*
- *Southwire: a leading manufacturer of wire and cable used in the transmission and distribution of electricity*
- *Premium Peanut: the largest peanut shelling operation in the world!*

### Coffee County Educated Workforce




Source: U.S. Census American Community Survey, 2021

### Education & Training

Georgia Quick Start is the nation's #1-ranked training program available at no cost to qualified companies. Quick Start's team collaborates with leadership and subject-matter experts to develop and deliver a custom workforce training solution.

Additionally, the Small Business Development Support Center is a vital resource to new and expanding businesses. The center offers entrepreneurs assistance in management training, new business development, current business performance, networking referrals, and a variety of free reference and resource materials developed by the U.S. Small Business Administration.




**Free Checking**


**Loans & Mortgages**


**Investments**

**Online & Mobile Banking**

**Local Decisions**







**211 East Ward Street, Douglas, Georgia 31533**  
**(912) 384-2233      [dnbdouglas.com](http://dnbdouglas.com)**





Douglas Municipal Gene Chambers Airport

### LARGEST EMPLOYERS

- Coffee Correctional Facility
- Coffee Regional Medical Center
- Diamond Builders Modular & Cargo
- Elixir Door & Metal
- Elixir Extrusion
- Fleetwood Homes
- Live Oak Homes
- Optima Chemical

- PCC Airfoils
- Pilgrim's
- Premium Waters
- Southwire
- Spectrum Distribution Center
- Sunbelt
- Wal-Mart Dispatch Center
- Wal-Mart Distribution

*\*Listed alphabetically, not by employee counts  
Source: Douglas-Coffee County Economic Development Authority*

The Douglas-Coffee County Chamber of Commerce also offers business assistance including networking events and leadership training programs and seminars.

#### Industrial Sites

One of our sites for expanding business is **Satilla Park**, a 183-acre industrial park featuring a single developable area of 175 acres. The site can be subdivided or developed as a single-user site. Another is **Park West Tracts Business Park**, comprised of two tracts of approximately 9.5-acres

each. To support these locations, a company has access to a workforce of:

- 20,500 manufacturing professionals
- 13,000 metal fabrication, machinery and equipment, and transportation equipment industry professionals

Coffee County is poised for the future with its skilled workforce, pro-business environment, and land availability which invites business relocation and expansion. With business steaming hot, the county's leaders are mindful of environmental and social impacts within our communities.



“ ”

Douglas-Coffee County is the best place to live. As a chamber board member I get to serve our community in so many ways and it's an honor to be part of such a great organization. I have loved seeing our community grow and prosper over the years, the best is yet to come!

**Kassidy Carter**  
Bay Carter Farms

**ULTIMATE GRAPHICS PLUS LLC**

234 W. WARD ST., DOUGLAS, GA 31533  
912-260-1129  
ultimategraphicsplus@gmail.com

SIGNS, BANNERS, T-SHIRTS, TROPHIES, EMBROIDERY





# General Coffee State Park

By Lydia Cobb

Welcome to the wiregrass region of South Georgia. Just minutes from downtown Douglas, General Coffee State Park holds lands of pine trees and low, clumping wiregrass thriving on sandy soils, in addition to the creeks, rivers, and swamps that constitute the wetlands. This is one of Georgia's largest state parks at 1,500-plus acres.

Some say this is Georgia's "best kept secret" as people exclaim their surprise at discovering how much there is to see and do

here. For more frequent visitors, they know to visit the Heritage Farm Museum with their kids to feed the goats, sheep, chickens, pigs, and donkeys. According to Park Manager Mikayla Spencer, many guests from out of town are not familiar with the park beyond their campsite reservations.

"They're surprised when we ask, have you gone to the museum or seen the animals?" said Spencer. "Locals know we're a pretty sizable park," she added, but like any destination, there will be people who are just now discovering this Georgia gem.

"Our big draw is the Heritage Farm," said Spencer. "It's several time periods with reconstructed historic buildings." General Coffee State Park is known for its agricultural history displayed with log cabins, a corn crib, tobacco barn, cane mill, and other farming exhibits.

Spencer also wants people to know the group shelter can be rented for birthday parties, reunions, and weddings, and comes complete with a full kitchen and two restrooms.

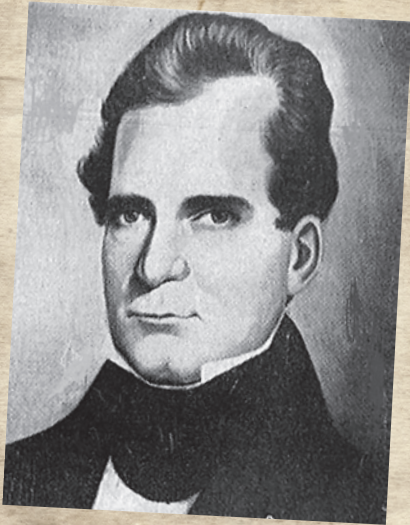
There are paddling opportunities on the serene Seventeen Mile River and the park rents canoes, kayaks, and pedal boats. The river and a boardwalk wind through cypress swamp where you may see rare and endangered pitcher plants, indigo snakes, and gopher tortoises indigenous to this region of the wiregrass community. Nature photographers and birders flock to this park for exceptional viewings and photography.

Equestrians share 13 miles of trails with hikers and cyclists. The park also rents road bikes and helmets, so everyone interested can cycle the paved surfaces along the four-plus miles of hiking and nature trails.

Boating is available on the four-acre Farm Pond for boats with electric motors. Anglers can target bream, catfish, and largemouth bass.



The park was donated to the state by a group of Coffee County citizens in 1970. It is named after **General John E. Coffee**, a planter, U.S. Congressman, and military leader.



SAVE  
THE  
DATES

- **Pioneer Harvest Festival** - 2nd weekend in November
- **Christmas on the Farm** - Features a special Santa appearance, holiday lights, hot chocolate, and artisan vendors.

The park has accommodations for everyone, from R/V and camping sites to cozy cottages. The Burnham House is an elegantly decorated 19th-century cabin that sleeps eight, and a large group lodge sleeps up to 40 people.

"I hope that everyone has a ranger experience and gets to experience the farm and leave with a memory that will follow them," added Spencer.

General Coffee State Park is open daily from 7 a.m. to 10 p.m. A ranger is onsite for guidance in interpretation, wayfinding, and questions. Daily park passes to Georgia State Parks are \$5 or \$50 annual; or \$85 combined with Historic Sites Annual Family Pass.

46 John Coffee Rd.

Nicholls, GA 31554

912-384-7082 | [gastateparks.org/GeneralCoffee](http://gastateparks.org/GeneralCoffee)

Approximately **160 species of birds** can be seen and heard throughout the year at General Coffee State Park.





# Arts & Culture



Heritage Station Museum

## Cultural Fun is Brewing

**D**ouglas has a vibrant downtown district. Highway 441 delivers people into town through six intersections that form the business district. There are restaurants, bakeries, shops and boutiques, salons, and spas. Because it's a bustling corridor, pedestrian safety has been improved with new signage and flashing beacons for mid-street crosswalks. You won't want to miss the 1940s-era movie house, The Martin Centre, with its Art Deco architecture hosting sold-out musical performances.

Here in the heart of South Georgia, Coffee County has an impressive array of cultural experiences that embrace history, nature, sports, the arts, shopping and dining, and live music and festivals.

**Douglas-Coffee County Parks and Recreation** offers year-round sports and programs that encourage active bodies, minds, and neighborly connections. All ages can engage in fitness programs and classes. Youth sports offer many pursuits, including

cheerleading, baseball, and swimming. In addition to special events and gatherings, the Parks and Rec department maintains the parks in our region that connect our neighborhoods with tennis courts, walking

trails, playgrounds, pools, picnic areas, and much more. Visit: Atkinson Plaza • Davis Wade Park • Eastside Park • Greenway Trail • Huckaby Complex • Jackie Allen Park • Jackson Park • Middle School Complex • North Madison Avenue Park • New! Premier Sports Athletic Complex • Round Tree Park • Unity Park • Wheeler Park • Whispering Pines



“

”

Douglas-Coffee County is a great place to live mainly because of the atmosphere. If you are wanting to raise a family, retire and relocate here, or just establish a career here, Douglas-Coffee County offers that.

**Jeffrey Ingram**  
City of Douglas

Operated by Coffee County Historical Society, the **Heritage Station Museum** displays a collection of steam engine and railroad memorabilia that interprets the county's connection with the railroad industry. The museum is fittingly located within the 1905 Georgia and Florida Railroad Depot. It's also home to the **Whistle Stop Souvenir Shop**, a great place to see and buy locally made products and regional art.

219 W. Ward St.

Douglas, GA 31533

912-383-9111 | [cityofdouglasga.gov/125/Heritage-Station-Museum](http://cityofdouglasga.gov/125/Heritage-Station-Museum)



The **WWII Flight Training Base and Museum** is home of the 63rd Army Air Forces Flying Training Detachment, listed in the National Register of Historic Places. This pilot school was established to meet the demand for thousands of pilots during World War II. Of the 55 civilian primary flight training centers in the nation, the Douglas base is the most intact, with many of its original buildings, field, and hangars as they looked in the early 1940s. The museum in the Instructors Barracks houses exhibits on the 63rd's training, aircraft, and equipment with WWII memorabilia and history.

3 Airport Circle  
Douglas, GA 31535  
912-383-9111 | [www.iiflighttraining.org](http://www.iiflighttraining.org)

Beyond the city and into the wilderness, three nearby hunting lodges offer guided or self-guided hunting excursions for quail, deer, and turkey. Hunting licenses must first be secured, and each website details the seasons, acreage, and accommodations for families or larger parties.

**Gopher Plantation** in Millwood, GA:

912-381-1482 | [gopherplantation.com](http://gopherplantation.com)

**Tussock Bay** in Axon, GA:

912-383-6635 | [tussockbay.com](http://tussockbay.com)

**Branhill Plantation** in Denton, GA:

912-389-8970 | [branhillplantation.com](http://branhillplantation.com)

An other-worldly micro-habitat in Georgia's coastal plain holds a roaring waterfall rushing over massive boulders, cave-like crevices, and 30-foot-high cliffs.

**Broxton Rocks Preserve** is an eroding sandstone outcrop with blackwater streams along Rocky Creek, longleaf pine-wiregrass woodlands, and pitcherplant seepage bogs. It's a cool and moist place in an otherwise desert-like climate on the flat rocks above fissures. There is a one-mile hike from the trailhead, open dawn until dusk. More than 500 rare and endangered plants and several rare reptiles thrive here, so visitation is managed to preserve this special place.

Contact The Nature Conservancy to arrange a tour:  
404-873-6946 | [nature.org/en-us/get-involved/how-to-help/places-we-protect/broxton-rocks/](http://nature.org/en-us/get-involved/how-to-help/places-we-protect/broxton-rocks/)



**Broxton Rocks Preserve**

Behind Tip Top Deli is a quaint commercial village designed for start-up businesses. Pay a visit to **The Shoppes at Tip Top**, where you'll be treated by NOLA Salon, Bling It On, and others.

107 W. Bryan St. | Douglas, GA 31533  
912-592-8582 | FB: [@theshoppesattiptop](https://www.facebook.com/theshoppesattiptop)



**Downtown Douglas First Fridays**  
**Downtown** is the place to be when shops and restaurants extend their hours. The streets are alive with First Friday patrons enjoying drinks, foods, and live music.



The **Main Street Market** at The Gazebo in Central Square features the best of South Georgia's handcrafted, locally made items for home, beauty and for meaningful gifts. First Saturday of the month – March to December – from 9 a.m. to 2 p.m.  
200 Madison Ave. S.  
Douglas, GA 31533  
912-384-1873 | [douglasga.org](http://douglasga.org)



# TIP TOP

— Deli & Bakery —

Indoor Dining  
Courtyard Dining  
Delivery  
Catering



### Hours of Operation

Tuesday - Saturday  
10:00am - 4:00pm

(912) 393-0061  
231 S. Peterson Ave., Douglas GA 31533

# THE SHOPPES AT TIP TOP



Tuesday - Saturday  
10:00 am - 4:00pm



(912) 592-8582  
107 W. Bryan St., Douglas, GA, 31535

*... and sew she did*

And Sew She Did opened in the fall of 2018 as a small fabric store. We expanded into a larger space in November 2020. We now carry over 2000 bolts of fabric and are an authorized Janome dealer.



(912) 592-3487  
108 N Peterson Ave., Douglas, GA 31533  
andsewshedidquiltshop.com  
tiptopdeli@outlook.com



# Marketplace & Fresh Breakfast



**Holiday Inn  
Express  
& Suites**

**& Newly Renovated Rooms!**

1636 S Peterson Ave Douglas GA 31535

T: 912.384.2100

F: 912.383.7021







## Adopt a Park!

City of Douglas and Douglas-Coffee County Parks and Recreation encourage volunteers to help keep city parks clean. There are approximately 12 parks in the city available for adoption.

200C S. Madison Ave.  
Douglas, GA 31533  
912-384-5978  
cityofdouglasga.gov

**SURCHEROS**  
DOUGLAS, GA

PROUD CHAMBER MEMBER SINCE 2007

**FRIENDLY TEX-MEX  
FRESH EVERY DAY**  
SURCHEROS.COM

# 2023 Events and Festivals



## Spring

- Great American Cleanup
- Wiregrass Children's Art Festival
- Taste of Douglas
- Relay for Life - Douglas
- Wings & Things Fly In & Festival
- Chamber Clay Shoot

## Summer

- Freedom Fest – J.C. Adams Municipal Park



## Fall

- Downtown Street Fest
- Gopher Tortoise Festival – Downtown Douglas
- Pioneer Harvest Festival – General Coffee State Park
- Hometown Harvest – Downtown Douglas
- Chamber Women in Business Think Pink *(fight against cancer)*



## Winter

- Annual Chamber Business Awards Event
- Leadership Coffee Begins
- Chamber Eggs & Issues Legislators Breakfast
- Festival of Lights Christmas Parade – Downtown Douglas
- Annual Tree Lighting



**El 1800**  
*Mexican Restaurant*

From our famous margaritas and crunchy guacamole to our live music shows and happy hours, El 1800 Mexican Restaurant is sure to show you a sizzling time.

**(912) 260-0090**  
1600 South Peterson Ave.  
Douglas, GA 31535





Douglas-Coffee County School System  
is Accredited



## Grounds for a Strong Workforce

**W**e in Coffee County know our children ARE our future at all levels of the community. That's why our parents, teachers, administrators, and community leaders work together to help our students succeed.

Our adult stakeholders work together to be a strong force in combining academic rigor with quality opportunities in the arts and humanities to help our students daily meet and exceed education standards and to prepare every student to excel in their future endeavors.

Our public and private school programs, including athletics and after-school enrichment, shape our students into well-rounded individuals who are prepared for adulthood. Upon graduation, our students are ready to pursue higher education locally if they choose, at South Georgia State College or Wiregrass Technical College, or range further to any of the 48 public colleges, universities, and technical colleges



“ ”

Coffee County and the City of Douglas are a great place to live and work. We have great schools and a thriving business community. Our local health care system receives an A Plus rating year after year. Douglas-Coffee County has a rich history of working together as a community to support economic development.

**Dr. Morris Leis, Coffee County Board of Education, Superintendent**

in Georgia, or to a plethora of private education institutions, or to any college or university in the world! Many are prepared and eager to step straight into the labor force or enter military service.

### **PRE-K THROUGH 12** **Coffee County School System**

The mission of Coffee County Schools is all about destination graduation for college, career, and life. The Coffee County School System is comprised of eight elementary schools (pre-kindergarten through grade 5), a middle school (grades 6-8), a 9th-grade academy, a comprehensive high school (grades 10-12), separate college and career academy (grades 9-12), and an alternative program (grades 6-12). The system serves more than 7,500 students.

The educators and administrators are committed to providing the highest quality educational experience for all students. A college preparatory program includes



### Public Grades Pre-K to 5 Ambrose Elementary School

3753 Vickers Crossing Rd.  
Ambrose, GA 31512  
912-359-5500

### Broxton-Mary Hayes Elementary School

410 S. Alabama St.  
Broxton, GA 31519  
912-359-2391

### Coffee County Head Start

511 Pine St.  
Douglas, GA 31533  
912-720-1007

### Eastside Elementary School

603 N. McDonald Ave.  
Douglas, GA 31533  
912-384-3187

### Indian Creek Elementary School

2033 Hwy. 158 W.  
Douglas, GA 31535  
912-393-1300

### Nicholls Elementary School

704 Van Streat Hwy.  
Nicholls, GA 31554  
912-345-2429

### Satilla Elementary School

5325 Old Axson Rd.  
Douglas, GA 31535  
912-384-2602

### West Green Elementary School

106 School Circle Rd.  
West Green, GA 31567  
912-384-2032

### Westside Elementary School

1302 W. Gordon St.  
Douglas, GA 31533  
912-389-6851

### Public Grades 6-8

#### Coffee Middle School

901 Connector 206 N  
Douglas, GA 31533  
912-720-1011

### Public Grades 9-12

#### George Washington Carver Freshman Campus

1020 S. Gaskin Ave.  
Douglas, GA 31533  
912-384-1342

#### Coffee County Educational Academy

1020 S. Gaskin Ave.  
Douglas, GA 31533  
912-383-4100

#### Coffee High School

159 Trojan Way  
Douglas, GA 31533  
912-384-2094

#### Wiregrass Regional College and Career Academy

706 W. Baker Hwy.  
Douglas, GA 31533  
912-389-6851

## Coffee County School Four-Year Graduation Rate



Advanced Placement and dual enrollment opportunities through South Georgia State College and Wiregrass Georgia Technical College.

Students can find what inspires them across disciplines, from music in the school band, to theater, sports, STEAM academics, and more.

### Coffee County School System Accredited by Cognia

1311 S. Peterson Ave.  
Douglas, GA 31533  
912-384-2086 | coffee.k12.ga.us

### Coastal Plains Education Charter High School

is Southeast Georgia's answer to helping students who have left traditional high schools earn a Georgia High School diploma. Coffee County is one of 15 locations across the South Georgia region offering a full range of high school courses in a flexible, self-paced format with evening classes to accommodate daytime work.

Tuition is free for students who enroll with Coastal Plains full time.

All courses are mastery-based which means students cannot fail a course. There are no deadlines, so students can take as much or as little time as needed to successfully complete the coursework through a variety of course formats including textbook and web-based instruction.

### Coffee County Campus

159 Trojan Way  
Douglas, GA 31533  
912-389-6534 | coastalplainscharter.org





## Education

Families who are interested in pursuing a private education have options in Douglas-Coffee County.

Serving more than 300 students, **Citizens Christian Academy** (CCA) provides a way to educate students that places their cognitive, emotional, social, and spiritual needs at the forefront. For over 50 years, Citizens Christian Academy has continuously inspired children to greater heights by instructing them in ways that stimulate their curiosity, deepen their faith and character in Christ, while cultivating a love of civic responsibility.

The K2-12 program is accredited by the Georgia Accrediting Commission, Bright from the Start, and is also a member of the Georgia Independent School Association. CCA provides multiple athletic opportunities, clubs, and civic opportunities to students. Academic and athletic programs at CCA are designed to prepare students to make a difference in the world and their community by developing the skills required to pursue their faith, higher education, and meaningful careers...all while fulfilling the mission of CCA: Cultivating Hearts. Challenging Minds. Impacting Culture.

### **Citizens Christian Academy**

1548 Hwy. 158 W.  
Douglas, GA 31533  
912-384-8862 | [citizenschristianacademy.org](http://citizenschristianacademy.org)

**First Academy** is a ministry of First Baptist Church of Douglas. The Academy partners with parents to provide a Christ-centered, academically challenging education for grades pre-K to ninth grade with approximately 140 students. Students consistently perform above national standards of achievement.

The Academy offers a weekly chapel service, art, music, athletics, and extra-curricular activities.

The school is accredited by the Georgia Accrediting Commission with a curriculum that aligns with state and national standards, and is a member of the Georgia Independent Christian Athletic Association (GICAA), allowing students to compete in athletics and fine arts events. First Academy is within First Baptist Church.

### **First Academy**

124 Gaskin Ave. N.  
Douglas, GA 31533  
912-720-5961 | [firstacademydouglas.org](http://firstacademydouglas.org)



**The Associate of Science in Nursing (RN) program at Wiregrass Georgia Technical College is named Number One in the state of Georgia for 2022, according to NursingProcess.org.**

### **LOCAL COLLEGES**

**Wiregrass Georgia Technical College**, a unit of the Technical College System of Georgia, has been promoting community, educational, and economic development by providing a highly trained workforce in an 11-county service area and beyond since 1963.

## **FIRST ACADEMY**

**Educating the next  
generation of leaders  
with a Biblical  
Worldview**

**1 year olds- 12th Grade**

**(912) 720-5961**

**[www.firstacademydouglas.org](http://www.firstacademydouglas.org)**







“

”

I enjoy living in Coffee County because of the small-town community atmosphere and it's a wonderful place to raise my daughter and son. Only by living here can you relish the taste of Coffee.

**Dr. Greg Tanner**  
South Georgia State College

The college offers associate degrees, diplomas, and technical certificates of credit; customized training for new and existing industries; professional and personal development through continuing education programs; and adult education services to meet the needs of citizens, businesses, and industry.

**Wiregrass Georgia Technical College Douglas Campus**

706 W. Baker Hwy. | Douglas, GA 31533  
912-389-4303 | wiregrass.edu



South Georgia State College - Douglas Campus

**South Georgia State College** (SGSC) is a residential state college of the University System of Georgia serving approximately 1,800 students. SGSC offers eight bachelor's degrees in biological sciences, management,

nursing, elementary/special education, long-term healthcare management, mechanical engineering technology, public service leadership, and the B.A. in professional, business, and technical writing. Associate degrees are also offered in 21 transfer pathways of study.

**South Georgia State College Douglas Campus**

100 W. College Park Dr.  
Douglas, GA 31533  
912-260-4200 | sgsc.edu

**Medical Institute of South Georgia** is a nonprofit allied health school that offers certificate and diploma courses for its health career programs, which include certifications in pharmacy technician and phlebotomy, medical assistants, nursing assistants, and more. The Institute has educated more than 16,000 graduates to excel in healthcare careers since its founding in 2006.

**Medical Institute of South Georgia**

1214 Peterson Ave. N.  
Douglas, GA 31533  
866-384-8680 | mis-ga.org

There are also opportunities for attaining a four-year degree or higher at nearby **Valdosta State University** in Valdosta, and **Georgia Southern University** in Statesboro.

**DAY CARE – EARLY LEARNING**

**All About Kids Early Learning & Childcare Center**

601 Waldroup Ave. | Douglas, GA 31535  
912-383-4540

**SOUTH GEORGIA STATE COLLEGE**

- Eight bachelor degree programs
- Over 20 associate transfer pathways
- Flexible class schedules
- Student clubs and organizations
- Housing (Douglas campus)
- Winning athletic teams

Schedule a visit and find out why SGSC is the right choice for you!

Apply now at [www.sgsc.edu/apply](http://www.sgsc.edu/apply)

DOUGLAS | WAYCROSS | VALDOSTA  
912.260.4200 or 912.449.7600

**EXPECT MORE. SUCCEED SOONER.**

**RN is coming to the Wiregrass Coffee Campus!\***

Apply today and get a head start on program pre-requisites!

\*Pending ACEN approval

229-468-2203 | **WIREGRASS** GEORGIA TECHNICAL COLLEGE | **WIREGRASS.EDU**

Equal Opportunity Institution | A Unit of the Technical College System of Georgia | WGTC is accredited by SACSCOC





# To Serve. To Heal. To Save.

### CRH Cardiology Group

Manish K Bansal, M.D., FACC, FSCAI  
 Willie Bell, M.D.  
 Glenn H. Evans, M.D., FACC  
 Joel Ferree, M.D.  
 Kendall M Griffith, M.D., FACC, FACP, FSCAI  
 Marci Johnson, FNP-C  
 Tim Johnson, FNP-C  
 Eddie Roberts, PA-C  
 1305 Ocilla Rd. – Douglas\*  
 3374 Greystone Way – Valdosta~  
 205 South Wayne St – Alma\*  
 1508 Tebeau St. – Waycross\*  
 \*For appt call 912-384-0600  
 ~For appt call 229-253-1020  
 Find us online at:  
[CRHCardiology.com](http://CRHCardiology.com)

### CRH Medical Specialty Group

(Cardiology & Internal Medicine)  
 H.P. Nair, M.D.  
 Michelle Jones, FNP-C  
 200 Doctors Dr., Ste S – Douglas  
 912-292-0658

### Cardiac Rehab & Pulmonary Rehab

The Wellness Center  
 2<sup>nd</sup> Floor - 200 Doctors Dr. - Douglas  
 912-383-6988

### CRH Urology Group

Al Mazur, M.D.  
*Not Accepting New Patients  
 Due to Upcoming Retirement*  
 200 Doctors Dr., Ste Q - Douglas  
 912-384-4030

### CRH Urology Clinic

C. J. Reddy, M.D.  
 Diana Tanner, FNP-C  
 2007 Ocilla Hwy. - Douglas  
 912-384-0162

### CRH Oncology Group

Eric Anderson, M.D.  
 Danielle Collins, FNP-C  
 Candi Musgrove, FNP-C  
 903 B W. Ward St. - Douglas  
 1508 Tebeau St. – Waycross  
 912-384-4111  
 Find us online at:  
[CRHOncology.com](http://CRHOncology.com)

### CRMC Infusion Services

Located at CRMC  
 912-383-5690

### CRH Pediatric Group

Jennifer Stroud, M.D.  
 Carol Williams, M.D.  
 200 Doctors Dr., Ste P - Douglas  
 912-384-9460

### CRH Family Medicine Group

Jacob Abraham, D.O.  
 200 Doctors Dr., Ste K- Douglas  
 912-384-4024

### CRH Family Medicine Group

Thaihang Nguyen, D.O.  
 Haley Lewis, FNP-C  
 100 Doctors Dr., Ste F - Douglas  
 912-384-9898 / 912-383-4945

### CRH Family Medicine Group

Lydia Tanner, M.D.  
 Kim Lott, PA-C  
 100 Doctors Dr., Ste G - Douglas  
 912-384-9898 / 912-384-2353

### CRH Family Medicine Group - Broxton

Debbie Purvis, FNP-C  
 103 Parallel St. - Broxton  
 912-359-3869

### Orthopedic Surgeons of GA

Stephen Augustine, D.O.  
 Hewatt 'Mac' Sims, M.D.  
 Laura Tharp, M.D.  
 Joshua Vickers, M.D.  
 DeWayne Dowling, FNP-C  
 Josh Hughes, ANP-BC  
 Mary Jon Roberson, PA-C  
 100 Doctors Dr., Ste I – Douglas\*  
 1622 Madison Ave. – Tifton~  
 1508 Tebeau St. – Waycross\*  
 1050 Valdosta Hwy. – Homerville\*  
 11 Cross St. – Hazlehurst\*  
 2804 C North Oak St. – Valdosta~  
 \*For appt call 912-383-6575  
 ~For appt call 229-387-8061  
 Find Us Online at:  
[OrthopedicSurgeonofGa.com](http://OrthopedicSurgeonofGa.com)

### CRH Women's Center

Steve Diamond, M.D.  
 Bradley Goldberg, M.D.  
 Justin Peterson, M.D.  
 Cathy Herrington, FNP-C  
 Meg Minchew, PA-C  
 Hali Varnedore, FNP-C  
 2010 Ocilla Rd. – Douglas  
 11 Cross St. - Hazlehurst  
 1508 Tebeau St. – Waycross  
 912-384-2500  
 Find us online at:  
[CRHWomensCenter.com](http://CRHWomensCenter.com)

### CRMC Mammography

190 D. Westside Dr.  
 912-383-5682

### CRH Industrial Medicine

Debra Lister, M.D.  
 Caroline Douglas, PA-C  
 Clay McKinnon, FNP-C  
 205 Shirley Ave. - Douglas  
 912-260-5400

### CRH Pain Management

Kate Paylo, D.O. FAAPMR  
 100 Doctors Dr., Ste A - Douglas  
 912-389-2160  
 Fax 912-720-9050  
 By Referral Only

### CRH Surgical Group

Timothy A. Humphries, M.D.  
 Chet Royals, M.D.  
 Thomas Wehmann, D.O.  
 100 Doctors Dr., Ste C - Douglas  
 1508 Tebeau St. – Waycross  
 912-384-5832

### Bariatric & Metabolic Center

Chet Royals, M.D.  
 Caroline Douglas, PA-C  
 100 Doctors Dr., Ste B - Douglas  
 912-720-9010  
[CoffeeRegionalBariatrics.com](http://CoffeeRegionalBariatrics.com)

### CRMC Wound Care & Hyperbaric Clinic

Thomas Wehmann, D.O  
 Charles Cowart, M.D.  
 304 Westside Dr. - Douglas  
 912-720-7002

### CRH School Based Health Clinic

Jennifer Davis, FNP-C  
 Coffee Middle School  
 912-389-6887

### Coffee Regional First Care

Jeffrey Winge, M.D.  
 Nicole Chaney, FNP-C  
 John Rowe, PA-C  
 Laura Steverson, FNP-C  
 Lee Williams, FNP-C  
 1301 S Peterson Ave Suite B – Douglas  
 NEW LOCATION NEXT TO STARBUCKS  
 7:30am-7:30pm\*\* 912-383-6966



CRMC Main Line (912) 384-1900  
 Patient Financial Services (912) 383-5614  
 CRH Physician Practices (912) 384-1477

At *Coffee Regional Medical Center & CRH Physician Practices* our mission is to provide exceptional care & wellness close to home. For more information, call one of the numbers listed above or visit us online at [www.coffeeregional.org](http://www.coffeeregional.org)  
 Medical Records (912) 384-1900 ext-3  
 Registration (912) 384-1900 ext-4549  
 Information as of Aug 2022  
 \*\* 7 days a week - times subject to change





Coffee Regional Medical Center

## State-of-the-art Medical Facilities and a Network of Expert Physicians

Coffee County residents and visitors have access to excellent physicians and medical providers. You have an emergency room and walk-in urgent care clinics. Dentistry, ophthalmology, addiction counseling, chiropractic care, and physical therapy are available. From hospice services to cardiology, neonatal to orthopedics, Douglas-Coffee County has your health needs covered for life.

### Coffee Regional Medical Center — Happy 70th Anniversary 2023!

Coffee Regional Medical Center has been the driving force for health and wellness in Coffee County and the surrounding area since 1953. As an Emory Healthcare Network Affiliate, the medical center collaborates with Emory in Atlanta on initiatives to improve care locally.

The medical center has 98 private patient rooms, including an Intensive Care Unit. A new eICU program offers enhanced care for intensive care patients through a partnership with Emory Healthcare. The Heart & Vascular Center houses two state-of-the-art cardiac catheterization labs for interventional cardiology and vascular procedures. The high-performance emergency department is equipped to handle life threatening situations.

Services offered at the medical center include inpatient and outpatient general and orthopedic surgical services including bariatric, spine, hip,

knee, and hand procedures. Expanded cardiopulmonary services include both diagnostic and interventional cardiology, placement of cardiac and peripheral stents, echocardiography, TEE and stress tests. The recently renovated, patient-centered chemotherapy infusion center assures the latest hematology and oncology services are available close to home.

The medical center also provides inpatient and outpatient laboratory services, nutrition services, an inpatient and outpatient pharmacy, radiology services including CT, PET CT, MRI, digital mammography and

ultrasound, vascular services, and wound care. The medical center's high-tech operating rooms, surgical units, and a newly remodeled women's health unit further complement the full-service facility.

Open to the public, the medical center's Dining Room offers healthy meals each weekday. The campus also includes medical office buildings that are home to multi-specialty physician offices including bariatrics, cardiology, family medicine, orthopedics, pain management, pediatrics, surgical services, women's health, oncology and hematology, industrial medicine, internal medicine, urology, and wound care and hyperbarics.

The Wellness Center, open 24/7 to members, offers daily exercise classes as well as personal trainers to customize a program to achieve desired health goals. Additionally, The Wellness Center offers various rehab programs including cardiac rehab, oncology rehab, and pulmonary rehab.

More than 800 Board-certified and specialty physicians, mid-level providers, and expert nursing staff comprise the healthcare team. CRMC offers an off-site urgent care center: Coffee Regional First Care, telemedicine services, a school-based health clinic, and industrial/occupational medicine services to serve the industries of Coffee and surrounding counties. Additionally, CRMC EMS has been named the #1 EMS service in Georgia, covering 600 square miles and a population of approximately 43,000. In 2022, EMS responded to about 8,000 calls.



“

”

Douglas has always been “home” and serving on the chamber board allows me to help promote positive economic change for businesses and families in and around Douglas/Coffee County.

**Ben Floyd**  
*Coffee Regional Medical Center*



## Most Recent Recognition and Awards

- *Metabolic and Bariatric Surgery Accreditation by the American College of Surgeons (2022)*
- *National Accreditation from Commission on Cancer by the American College of Surgeons (2022)*
- *Orthopedic Center of Excellence by DNV GL Business Assurance, a world-leading certification body (2022)*
- *Recertification of Interventional Cardiac Cath Lab by the Georgia Department of Community Health (2022)*
- *Wound Center of Excellence awarded to the Wound Care & Hyperbaric Clinic by RestorixHealth (2021)*
- *Level II Emergency Cardiac Center designation by the Georgia Department of Community Health (2021)*
- *Partnership with Emory Healthcare Affiliate Network is strengthened with addition of bariatric program (2020)*

## Coffee Regional Medical Center & Emergency Room

1101 Ocilla Rd. | Douglas, GA 31533  
912-384-1900 | coffeeregional.org

## Coffee County Health Department

1111 W. Baker Hwy. | Douglas, GA 31533  
855-473-4374 | sehdpd.org/our-counties/coffee-county-health-department

**Did you know?** Many medical providers and facilities are members of the Douglas-Coffee County Chamber of Commerce. To research and locate providers in all areas of specialty, visit:



# Pet+Med

If your family member has fur, feathers, or scales, there are excellent veterinarians in the region who can assist you with maintaining and improving your pet's health and wellbeing. In addition to doctors of veterinary medicine (DVM) here in Douglas, there are pet spa and grooming services, and boarding and daycare.

A member of Douglas-Coffee Chamber, **Lindsey & Wills Animal Hospital** provides comprehensive medical, surgical, and dental care for dogs and cats. Dr. Mike Wills and son Dr. Daniel Wills work with referral centers in Florida and Georgia when special diagnostic treatment procedures are required. Their compassionate care includes a pharmacy, in-hospital surgery suite and digital x-ray, a closely supervised hospitalization area, and indoor boarding kennels with an outdoor walking area.

## Lindsey & Wills Animal Hospital

1330 West Baker Hwy.  
Douglas, GA 31533  
912-384-8160  
lindseyandwills.com



# Oasis Inc.

"The Safe Beauty Place"

A relaxing place to get a massage or facial combined with a full doctor's office, Oasis medAesthetics is here for you. Check out our full services provided by medically trained professionals!

The time to  
*relax*  
is when you don't have  
time for it.



Combining cutting-edge-medicine  
with state-of-the-art-cosmetic

**(912) 384-2555**  
safebeautyplace.com

117 W Bryan St. | Douglas, GA



**Crawford Jewelers**

**(912) 384-0073**  
www.crawfordjewelers.com  
1351 Bowens Mill Rd SE, Douglas, GA 31533



# Real Estate & Housing



## Countryside to Intown, Coffee County is Home

**W**here do you want to live? Nestled in the Wiregrass Region, Coffee County has both sprawling countryside living options and in-city housing near downtown nightlife. There are lakefront homes in Baymeadows. Historic homes and loft rentals are found in downtown Douglas. Small or large farms, apartments, condominiums, and townhomes, they're all here.

Coffee County has senior living communities, too, and for those who require more services, assisted living centers are comfortable options.

Availability fluctuates, so contact a real estate agent – and check out our Member Directory online – to find current housing in the areas you desire. Welcome home to Douglas-Coffee County!



“

”

Coffee County is HOME. It is an amazing place to live! Watching Coffee County grow and progress has been an incredible experience year after year. It's a pleasure to call Douglas-Coffee County home.

**Archie Rish**  
**Chick-fil-A Douglas**

### Realtors

Douglas-Coffee County Chamber has many realtor members who are ready to help you with your next home sale or move-in. Scan the QR Code to be linked to the Real Estate Directory.

### Coffee County Housing

- 17,301 Total Housing Units
- 14,934 Households
- Median Home Value ..... \$136,200
- Median Rent ..... \$659

Source: U.S. Census Bureau American Community Survey 2021





Working together with our city to  
better our communities



HOUSING AUTHORITY  
CITY OF DOUGLAS

**Clara S. Graham**  
Executive Director

Providing affordable housing to eligible low-income families, elderly, and persons with disabilities.



“A Housing of Choice Instead of a Housing of Last Resort”



P.O. Box 1088, Douglas, GA 31534



(912) 384-5812



dougha.com



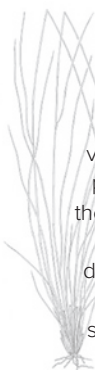
The cost of living in Coffee County is incredibly reasonable – nearly 25% lower than the U.S. average. A major reason for this is our housing costs, which are less than half the U.S. average. This means your dollars stretch so much farther than in other parts of the country. For example, you can purchase a well-appointed, three-bedroom, 2,300 square-foot ranch on a sizeable, manicured lot for less than \$300,000.

Of the nearly 15,000 occupied housing units in Coffee County, 59% are single-family homes and 7.9% are apartment units.



**Wiregrass *Aristida stricta***

Wiregrass dominates understory vegetation in sandhills and coastal plain longleaf pine ecosystems in the Southeast. It's a clump, or bunch-forming grass, that needs fire to disperse its seeds. This indigenous plant's ecological role is to carry surface fires without high intensity.



**New | Pre Owned | Parts & Repair**

**MIKE'S**  
Golf Carts & Powersports

**Douglas, GA**

**912.384.7113**  
mikesgolfcarts.com  
529A Bowens Mill Rd. SW, Douglas, GA 31533

**WE'RE WITH YOU.**

Douglas Locations:  
100 S Pearl Ave | 912.384.2701  
901 Bowens Mill Rd SW | 912.384.2701

**AMERIS BANK**

**Member FDIC**  
EQUAL HOUSING LENDER

**CENTURY 21**  
Sea Mar Realty

**Rhonda Youngblood**  
Mobile: (912) 383-2980  
Office: (912) 384-0316  
709 North Madison Ave • Douglas, GA 31533





**Property  
Tax  
Millage  
Rates**

Coffee County	7.747
City of Douglas	8.363
City of Nicholls	6.849
City of Broxton	7.366
City of Ambrose	0.000
Coffee Co Schools	16.019

**Coffee County Tax Commissioner  
County Courthouse**

101 S. Peterson Ave., Ste. A15 | Douglas, GA 31533  
912-384-4895

**Coffee County Board of Tax Assessor**

101 S. Peterson Ave., Ste. A21 | Douglas, GA 31533  
912-384-2136



# ADAMS

Landscaping &  
Irrigation, LLC

**Bradley Adams**  
**912.381.0189**

